

**PLEASE CHECK WWW.MOLEX.COM FOR LATEST PART INFORMATION**

**Part Number:** [0442624302](#)  
**Status:** **Active**  
**Description:** 9.14mm (.360") Pitch Crimp Terminal, Power Contact, Tin (Sn), All Over Nickel (Ni), 10-12 AWG

**Documents:**

[Drawing \(PDF\)](#) [RoHS Certificate of Compliance \(PDF\)](#)

**General**

Product Family	Crimp Terminals
Series	<a href="#">44262</a>
Crimp Quality Equipment	Yes
Product Name	N/A

**Physical**

Durability (mating cycles max)	500
Gender	Female
Material - Metal	High Performance Alloy (HPA)
Material - Plating Mating	Tin
Packaging Type	Reel
Termination Interface: Style	Crimp or Compression
Wire Insulation Diameter	.79mm (.031") max.
Wire Size AWG	10, 12
Wire Size mm <sup>2</sup>	N/A

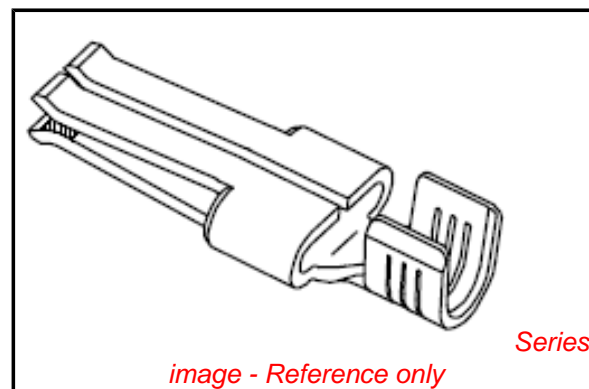
**Electrical**

Current - Maximum per Contact	20A
Voltage - Maximum	600V AC

**Material Info**

**Reference - Drawing Numbers**

Sales Drawing	SD-44262-100
---------------	--------------



**EU RoHS**

**ELV and RoHS  
Compliant**  
**REACH SVHC**  
 Not Reviewed  
**Halogen-Free  
Status**  
**Not Reviewed**

**China RoHS**



**Need more information on product  
environmental compliance?**

Email [productcompliance@molex.com](mailto:productcompliance@molex.com)  
 For a multiple part number RoHS Certificate of  
 Compliance, [click here](#)

Please visit the [Contact Us](#) section for any  
 non-product compliance questions.

**Search Parts in this Series**

[44262Series](#)

**Use With**

638326000 Crimp Applicator

**Application Tooling | FAQ**

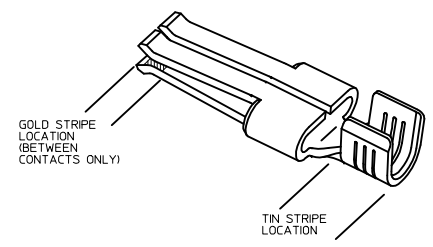
*Tooling specifications and manuals are  
 found by selecting the products below.  
 Crimp Height Specifications are then  
 contained in the Application Tooling  
 Specification document.*

**Global**

Description	Product #
Mini-Mac™ Applicator	<a href="#">0638326000</a>
Hand Crimp Tool for 10, 12, 14 AWG Power Contact Terminals	<a href="#">0638195400</a>

**PLEASE CHECK [WWW.MOLEX.COM](http://WWW.MOLEX.COM) FOR LATEST PART INFORMATION**

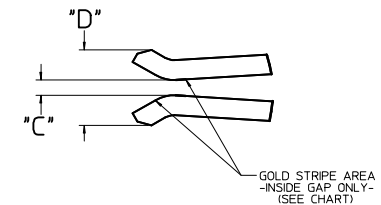
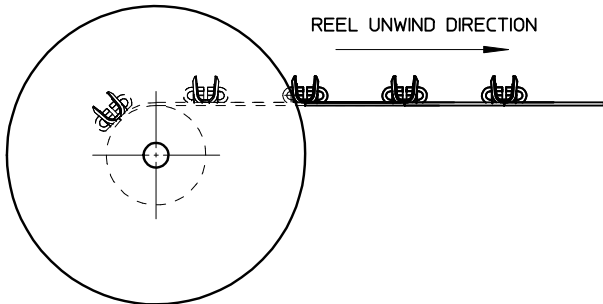
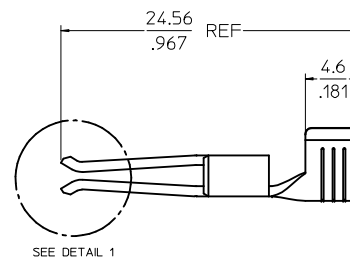
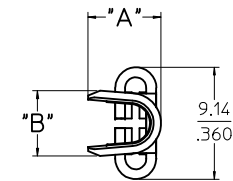
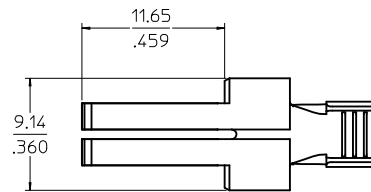
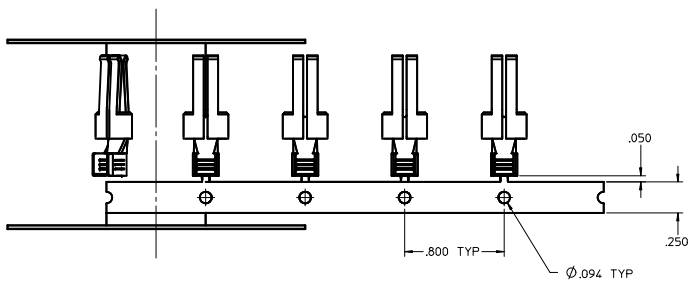
PART NUMBER	PLATING	RECOMMENDED WIRE SIZE	DIM 'A' HEIGHT	DIM 'B' WIDTH	DIM 'C' GAP	DIM 'D' TIPS	RECOMMENDED CRIMP APPLICATOR	MATING CONTACT	PACKAGE SIZE
44262-4304	80-160µ" TIN OVER 50µ" NICKEL OVERALL	8 AWG (2) 12 AWG	7.42±0.5 .292±.020	5.84±0.5 .230±.020					1800 PARTS/ REEL
44262-4334	30µ" GOLD STRIPE OVER 50µ" NICKEL OVERALL WITH 80-130µ" SELECT TIN								
44262-4302	80-160µ" TIN OVER 50µ" NICKEL OVERALL	10-12 AWG (2) 14 AWG	5.97±0.5 .235±.020	5.33±0.5 .210±.020	0.10/.004	2.54/.100 REF		44262-6*** SEE MOLEX DRAWING SD-44262-026 OR WITH BLADES 0.64/.025 THICK X 6.10/.240 MM WIDE	2500 PARTS/ REEL
44262-4332	30µ" GOLD STRIPE OVER 50µ" NICKEL OVERALL WITH 80-130µ" SELECT TIN								
44262-4306	80-160µ" TIN OVER 50µ" NICKEL OVERALL	14-16 AWG (2) 16 AWG	5.20±0.5 .205±.020	5.33±0.5 .210±.020					
44262-4336	30µ" GOLD STRIPE OVER 50µ" NICKEL OVERALL WITH 80-130µ" SELECT TIN	(2) 18 AWG							
44262-4404	80-160µ" TIN OVER 50µ" NICKEL OVERALL	8 AWG (2) 12 AWG	7.42±0.5 .292±.020	5.84±0.5 .230±.020					1800 PARTS/ REEL
44262-4434	30µ" GOLD STRIPE OVER 50µ" NICKEL OVERALL WITH 80-130µ" SELECT TIN								
44262-4402	80-160µ" TIN OVER 50µ" NICKEL OVERALL	10-12 AWG (2) 14 AWG	5.97±0.5 .235±.020	5.33±0.5 .210±.020	0.64/.025	3.07/.121 REF		FOR USE WITH BLADES 1.27/.050 THICK X 6.10/.240 MM WIDE	2500 PARTS/ REEL
44262-4432	30µ" GOLD STRIPE OVER 50µ" NICKEL OVERALL WITH 80-130µ" SELECT TIN								
44262-4406	80-160µ" TIN OVER 50µ" NICKEL OVERALL	14-16 AWG (2) 16 AWG	5.20±0.5 .205±.020	5.33±0.5 .210±.020					
44262-4436	30µ" GOLD STRIPE OVER 50µ" NICKEL OVERALL WITH 80-130µ" SELECT TIN	(2) 18 AWG							
44262-4504	80-160µ" TIN OVER 50µ" NICKEL OVERALL	8 AWG (2) 12 AWG	7.42±0.5 .292±.020	5.84±0.5 .230±.020					1800 PARTS/ REEL
44262-4534	30µ" GOLD STRIPE OVER 50µ" NICKEL OVERALL WITH 80-130µ" SELECT TIN								
44262-4502	80-160µ" TIN OVER 50µ" NICKEL OVERALL	10-12 AWG (2) 14 AWG	5.97±0.5 .235±.020	5.33±0.5 .210±.020	0.30/.012	2.74/.108 REF		FOR USE WITH BLADES 0.81/.032 THICK X 6.10/.240 MM WIDE RECOMMENDED FOR 6 CIRCUITS AND ABOVE	2500 PARTS/ REEL
44262-4532	30µ" GOLD STRIPE OVER 50µ" NICKEL OVERALL WITH 80-130µ" SELECT TIN								
44262-4506	80-160µ" TIN OVER 50µ" NICKEL OVERALL	14-16 AWG (2) 16 AWG	5.20±0.5 .205±.020	5.33±0.5 .210±.020					
44262-4536	30µ" GOLD STRIPE OVER 50µ" NICKEL OVERALL WITH 80-130µ" SELECT TIN	(2) 18 AWG							
44262-4604	80-160µ" TIN OVER 50µ" NICKEL OVERALL	8 AWG (2) 12 AWG	7.42±0.5 .292±.020	5.84±0.5 .230±.020					1800 PARTS/ REEL
44262-4634	30µ" GOLD STRIPE OVER 50µ" NICKEL OVERALL WITH 80-130µ" SELECT TIN								
44262-4602	80-160µ" TIN OVER 50µ" NICKEL OVERALL	10-12 AWG (2) 14 AWG	5.97±0.5 .235±.020	5.33±0.5 .210±.020	0.89/.035	3.33/.131 REF		FOR USE WITH BLADES 1.27/.050 THICK X 6.10/.240 MM WIDE RECOMMENDED FOR 6 CIRCUITS AND ABOVE	2500 PARTS/ REEL
44262-4632	30µ" GOLD STRIPE OVER 50µ" NICKEL OVERALL WITH 80-130µ" SELECT TIN								
44262-4606	80-160µ" TIN OVER 50µ" NICKEL OVERALL	14-16 AWG (2) 16 AWG	5.20±0.5 .205±.020	5.33±0.5 .210±.020					
44262-4636	30µ" GOLD STRIPE OVER 50µ" NICKEL OVERALL WITH 80-130µ" SELECT TIN	(2) 18 AWG							



- NOTES:
1. MATERIAL: COPPER ALLOY .032 IN THICK
  2. FINISH: PER MOLEX PLATING SPECIFICATION ES-88 - SEE CHART
  3. FOR CRIMP APPLICATOR SEE CHART
  4. FOR CRIMP TOOLING CONTACT MOLEX OR VISIT THE MOLEX WEBSITE AT: WWW.MOLEX.COM
  5. STANDARD PACKAGE SIZE: SEE CHART
  6. SEE PRODUCT SPECIFICATION: PS-44262-001 FOR MORE INFORMATION
  7. PARTS ARE RoHS COMPLIANT
  8. FOR MATING CONTACT: SEE CHART
  9. FOR CRIMP SET UP INFORMATION SEE MOLEX APPLICATION SPECIFICATION DOCUMENT:  
8 AWG - ATS-638326300  
10/12 AWG - ATS-638326000  
14/16 AWG - ATS-638326100

<b>REV DESCRIPTIONS IN CHART</b> REC NO: UCP2009-1020 DRAWN: DOWNDATA CHKD: 2008/11/04 APPR: APATEL 2008/11/04	<b>QUALITY SYMBOLS</b> ∇=0 ∇=0 ∇=0	<b>GENERAL TOLERANCES (UNLESS SPECIFIED)</b>		<b>DIMENSION STYLE</b> MM/IN		<b>SCALE</b> 1:1	<b>DESIGN UNITS</b> INCH	<input checked="" type="checkbox"/> THIRD ANGLE <input type="checkbox"/> PROJECTION	
		4 PLACES ±.005	±.010	DRAWN BY	DATE	<b>TERMINAL - RECEPTACLE POWER CONTACT</b>  <b>MOLEX INCORPORATED</b> MATERIAL NO. <b>SD-44262-100</b> DOCUMENT NO.			
		3 PLACES ±.005	±.010	CHECKED BY	DATE				
		2 PLACES ±.025	±.010	APPROVED BY	DATE				
1 PLACE ±.025	±.010								
DRAFT WHERE APPLICABLE MUST REMAIN WITHIN DIMENSIONS		ANGULAR ±1/2°		SEE CHART		SIZE D		SHEET NO. 1 OF 2	

20 19 18 17 16 15 14 13 12 11 10 9 8 7 6 5 4 3 2 1



DETAIL 1  
SCALE 10:1

<b>SEE SHEET 1</b> IEC NO: UCP2009-1020 DRAWN DATA 2008/11/04 CHKD: 2008/11/04 APPR: APATEL 2008/11/04 REV DESCRIPTION	QUALITY SYMBOLS ▽=0 ▽=0 ▽=0		GENERAL TOLERANCES (UNLESS SPECIFIED) <table border="1"> <thead> <tr> <th></th> <th>mm</th> <th>INCH</th> </tr> </thead> <tbody> <tr> <td>4 PLACES</td> <td>± .10</td> <td>± .004</td> </tr> <tr> <td>3 PLACES</td> <td>± .15</td> <td>± .005</td> </tr> <tr> <td>2 PLACES</td> <td>± 0.25</td> <td>± .010</td> </tr> <tr> <td>1 PLACE</td> <td>± 0.25</td> <td>± .010</td> </tr> <tr> <td colspan="3">ANGULAR ±1/2°</td> </tr> </tbody> </table>			mm	INCH	4 PLACES	± .10	± .004	3 PLACES	± .15	± .005	2 PLACES	± 0.25	± .010	1 PLACE	± 0.25	± .010	ANGULAR ±1/2°			DIMENSION STYLE MM/IN DRAWN BY BKOSTIC DATE 2006/11/13 CHECKED BY DATE BKOSTIC 2006/11/13 APPROVED BY DATE APATEL 2006/11/14		SCALE 5:1 DESIGN UNITS INCH THIRD ANGLE PROJECTION	
		mm	INCH																							
	4 PLACES	± .10	± .004																							
	3 PLACES	± .15	± .005																							
2 PLACES	± 0.25	± .010																								
1 PLACE	± 0.25	± .010																								
ANGULAR ±1/2°																										
DRAFT WHERE APPLICABLE MUST REMAIN WITHIN DIMENSIONS			MATERIAL NO. SEE CHART SIZE D		TITLE TERMINAL - RECEPTACLE POWER CONTACT																					
			MOLEX INCORPORATED		SHEET NO. 2 OF 2																					
			DOCUMENT NO. SD-44262-100		THIS DRAWING CONTAINS INFORMATION THAT IS PROPRIETARY TO MOLEX INCORPORATED AND SHOULD NOT BE USED WITHOUT WRITTEN PERMISSION																					

19 18 17 16 15 14 13 12 11 10 9 8 7 6 5 4 3 2 1